

Coordinating Team

Dan Aikins | Interim Youth Ministries Dir.
Mauricio Chacón | Associate Pastor for Fuente
Brandon Gaide | Associate Pastor for Next Gen
Ginny Glass | Communications & Media Dir.
Meliza Gómez | Contemporary Music Dir.
Alf Halvorson | Senior Pastor
Charles Hausmann | Traditional Music Dir.
Kristin Huffman | Associate Pastor for Outreach
Brett Hurst | Relationships Minister
Christyn Knoop | Adult Ministries Dir.
Gena Kookan | Sr. Leadership Ministry Coor.
Rick Myers | Associate Pastor for Caring
Rachel Poysky | Children's Ministries Dir.
Becky Riggs | Business Administrator
Dave Steane | Executive Pastor & Head of Staff
Kathryn White | Coordinating Music Dir.
Karen Winship | Human Resources Dir.

Dave Peterson | Pastor Emeritus
Gary Bowker | Pastor Emeritus

MDPC Foundation

For information, contact Business Administrator
Becky Riggs at briggs@mdpc.org or 713-953-2570.



Praises and Prayers

The White Rose is given in memory of:

• Bill Harlan passed away on February 3, 2016.

Members recently released from the hospital:

• Kathy Knop

Ministry Partners 2016

This week, we ask that you please pray for these MDPC partners in ministry:

Bridges to Life ministers to prisoners and victims by showing them the transforming power of God's love and forgiveness. It connects communities to prisons in an effort to reduce the recidivism rate (particularly from violent crimes) and number of crime victims, and enhance public safety.
bridgestolife.org

Camp Aranzazu is a year-round barrier-free camp located on Copano Bay. There, the lives of children and adults with chronic illnesses and disabilities are enriched by environmental study and unique camping and retreat experiences.
camparanzazu.org

MDPC Field Partner Dr. M practices and teaches dentistry while sharing the Good News of Jesus with tribes living in abject poverty in South Asia. There, the 98% Muslim population has the least amount of dental care in the world. Please pray for his and his family's ministry and their health.

WEEKLY FINANCIAL UPDATE

OPERATING INCOME

2016 Budget	\$ 11,050,000
Expected Income to Date	\$ 852,294
Actual Income to Date	\$ 1,053,256
Current Income Surplus	\$ 200,962

By encouraging violent offenders to take responsibility for the profound impact of their crimes, Bridges to Life dramatically lowers rates of recidivism. >



Sunday, February 14, 2016

The Geography of our Lives

Jerusalem, A Convoluted Place

Luke 9:51, Mark 10:32-34, Luke 13:31-35

Alf Halvorson preaching



Happening at MDPC

Moving Forward: We Thought We Heard the Angels Sing

Come hear MDPC member Tom Cleveland review the inspiring book about the WWII crew that crash landed in the Pacific Ocean while on a secret mission for the War Department. It is an amazing story of faith, transformation, and miracles. Participants will receive a book.

Wednesday, February 17 | 5:45 PM | Parlor | \$10 for dinner (optional)

Please RSVP to Bitsy Cleveland: bcleveland@mdpc.org or 713-490-9542

A Very Special Dinner and a Marriage

Parents of children with special needs and foster/adoptive parents: Enjoy dinner with your spouse and learn ways to stay connected in the midst of raising your very special family.

Saturday, February 27 | 5:30-7:30 PM | \$15/couple (includes dinner and childcare)

Volunteer servers are needed! Please consider helping at this special event.

Contact Keri Mosk, Special Needs Ministry Director: kmusk@mdpc.org, 713-490-9265

Make a Difference with CanCare

You can make a difference in someone else's life! Share the hope. If you are a cancer survivor or have been a caregiver to a cancer survivor and have a passion for helping others, this may be the mission for you.

Volunteer Training: February 19-21

For more information or to register, visit cancare.org or call 713-461-0028.

A "Bite"-Sized Opportunity to Serve

International Seafarers Ministry annually holds a two-week Chaplain Training School at the Port of Houston Seafarers Center. This school is the only one of its kind in our hemisphere and attracts attendees primarily from North and South America. ISM is looking for a small group to come in and serve a casual midday lunch on Tuesday, March 1. It's a fun opportunity to meet and have lunch with Houston chaplains and attendees from many other ports.

With questions and for details, contact Peter Ham: peterham@sbcglobal.net

Spring Break in Galveston

All ages are encouraged to come serve at GUM (Galveston Urban Ministries), working on construction tasks like demolition, drywall, gardening, and painting. MDPC Youth Ministry will be hanging out with the GUM children at the park and rec center for games, fun, a Bible lesson. Everyone will come together to put on a big community lunch!

Saturday, March 12 | 9:00 AM-1:00 PM

Families and individuals of all ages, register at register.mdpc.org.

The Spoken Word Returns!

Whether you participate as a reader or a listener, plan now to experience The Spoken Word. As Paul said in Romans 10:17, "Faith comes from hearing and hearing by the Word of God."

In the Chapel during Holy Week: March 21 to March 24

Registration opens February 21 at spokenword.mdpc.org.



Loving God. Proclaiming Christ. Living Generously. Engaging All.
11612 Memorial Drive | Houston, Texas 77024 | mdpc.org | 713-782-1710

MDPC MORNING WORSHIP

Worship "sums up and confirms ever afresh the process of saving history which has reached its culminating point in the intervention of Jesus Christ in human history, and through this summing up and ever-repeated confirmation, Christ pursues His saving work by the operation of the Holy Spirit." –JJ. Von Allmen

8:30 & 9:45 AM SERVICES

WELCOME

*SONGS OF PRAISE

*PRAYER OF CONFESSION & ASSURANCE

Brett Hurst (8:30), Rachel Poytsky (9:45)

BAPTISM (9:45)

George Layton Tucker, son of Joshua and Natalie Tucker

BAPTISM AFFIRMATION

SONG OF RESPONSE

GIFTS OF GRATITUDE

Dave Steane

MESSAGE *The Geography of Our Lives: Jerusalem, A Convoluted Place*

Alf Halvorson

RESPONSE OF THE PEOPLE

*CHARGE AND BENEDICTION

Musicians participating in these services: Joe Gavito, guitar; Meliza Gómez, worship leader; Craig Gysler, keys; Michael Middleton, worship leader; Asher Pudlo, drums; and Dennis Whittaker, bass

11:15 AM TRADITIONAL SERVICE

PRELUDES *Jesus Loves Me/My Faith Looks Up to Thee*

arr. Wayne Oquin (b. 1985)

WELCOME AND CALL TO WORSHIP

Dave Steane

CHORAL INTROIT *God So Loved the World*

Lisa Borik, Soprano

Bob Chilcott (b. 1955)

*HYMN OF PRAISE *All Hail the Power of Jesus' Name*

#142; Vs. 1, 2, 3 | CORONATION

*PRAYER OF CONFESSION AND ASSURANCE

*AFFIRMATION OF FAITH

The Apostles' Creed

ANTHEM

Morning Trumpet
Tommy Glass, Soloist

arr. Alice Parker and Robert Shaw

BAPTISM

Alexis Maria Viaud, daughter of Guillermo and Christen Viaud

Alf Halvorson

BAPTISM AFFIRMATION

OFFERTORY *Sanctus (Holy) from St. Cecilia Mass*

Brian Yeakley, Tenor

Charles Gounod (1818-1893)

MESSAGE *The Geography of Our Lives: Jerusalem, A Convoluted Place*

Alf Halvorson

*HYMN OF RESPONSE *Where Cross the Crowded Ways of Life*

#408; Vs. 1, 2 | GERMANY

*CHARGE AND BENEDICTION

POSTLUDE *Fantasy in G*

J.S. Bach (1685-1750)

Musicians participating in this service: Kathryn White, organ/piano; Charles Hausmann, Sanctuary Choir Conductor

*Please stand if able.

CCLI # 182374

PLEASE NOTE

MDPC Is Closed Tomorrow (February 15)

In observance of Presidents Day, MDPC's campus and offices will be closed.

Congregational Meeting on Sunday, February 28

In two weeks, there will be a congregational meeting immediately following the 9:45 AM service for the purpose of approving the pastors' terms of call.



The Geography of our Lives

Eat Pray Lent (EPL) is back this Lenten season! As Pastor Alf's sermons explore the locations at which Jesus stops on His journey to the cross, seven-week EPL small groups will meet to dig deeper into each week's message.

Seven-week small groups begin meeting this week.

Visit the Sanctuary Connection Center or epl.mdpc.org for details and to sign up.

Eat Pray Lent

Girls' Getaway

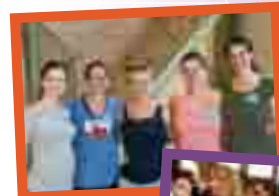
Friday-Sunday, February 26-28

Mill Creek Ranch Resort | Canton, Texas

Gather for a weekend filled with fun, connecting, and good eating. Registration closes tomorrow, so secure your spot today!

Registration: women.mdpc.org (\$100/person)

MDPC Women



STORIES

from Around the Corner and Around the World

Join Kristin Huffman and Rachel Poytsky, as they share touching experiences they've had with MDPC's local and global mission partners.

Tuesday, February 16 | Fellowship Hall

Program (Free): 10:30 AM

Lunch (\$9.50): Noon



Donate Blood



Save Lives

Next Sunday, February 21

8:00 AM-2:00 PM

Fellowship Hall

Pre-register today in the Sanctuary Lobby or at giveblood.org. This helps the Blood Center schedule enough technicians—but walk-ins on the day of the drive (February 21) are welcome!

The Geography of our Lives

Before the service, take a moment to read and reflect on the following excerpt as you prepare to enter into a time of praise and worship.

It is actually rather amazing how much movement there is in the Bible. In both the Old and New Testaments, people are constantly en route. Sometimes they ran away from God. Frequently they ran toward God, following the calling that invited them to leave home and move to another place. Even those who began their journey by running from God soon discovered they hadn't gone far before finding themselves back in the Savior's arms once again. You can't be in any kind of serious drama with God and not find yourself on the move. Very few people in the Bible got their relationship with God straightened out while staying at home. They were not open to the intervention of a Savior until they left the security of the life they knew. Typically it is on the journey from the former place to the new place that faith is born or reborn. In order to follow Jesus, you have to leave something behind....Jesus invites you to leave, not because it was necessarily bad, but because you will never be free to receive the salvation of God until you let go of the home to which you were once clinging. We would all like to see exactly where Jesus is going to lead us before we leave the place where we have grown comfortable. But as the disciples knew, there is something too compelling about Jesus. We cannot see him for who he is, much less follow him, and still be concerned with such things as certainty.

—From *Hustling God* by M. Craig Barnes,
President of Princeton Theological Seminary

The Geography of our Lives

Jerusalem, A Convoluted Place

Luke 9:51, Mark 10:32-34, Luke 13:31-35

Alf Halvorson Preaching

On Ash Wednesday, we started our journey to the Cross by focusing on the difference between the metaphors of *traveling* and *touring*. Daniel Boorstin, the former Librarian of Congress and an eminent historian, in his book, *The Image: A Guide to Pseudo-Events in America*, wrote that *to travel* is to go through *travail*, even torture—that is what the word originally meant. Travel has the power to transform, whereas *tour* means literally “a circle.” You can go there and back and remain virtually the same. I used examples from J.R.R. Tolkien and the Havasupai Falls to get at the idea that where there is little investment or risk or sacrifice, there is little return, little change, and little depth and transformation. However, when Jesus called His first disciples, He said to them, “Take up your cross and follow Me. For those who want to save their life will lose it, but those who lose their life for My sake, and for the sake of the Gospel, will find it. For what will it profit you to gain the whole world and forfeit your soul?”

1. Have you been as a Christian, more a tourist or more a follower of Jesus (a traveler)? I talked about it being helpful for us to admit that we all have been half-in, half-hearted, and that our sails have been at half-mast. Why is repentance so crucial at the start of Lent? What happens with it? What happens without it?
2. Why do you think everything in the Gospel of Luke (Luke 9:51-19:48) moves from Galilee in the North to Jerusalem in the South? I talked about Jerusalem being a convoluted place. What did Jesus confront in Jerusalem? What made it a holy place? What made it a place of conflict? What made it a place where religion and ritual could easily become a rut?
3. In Mark 10: 28-42, what is your explanation of why Jesus walks ahead of the rest? And why, in your mind, are the disciples amazed and afraid?

